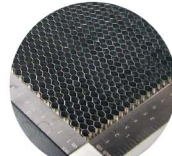


Optional Items



Pass-through Door Switch Module



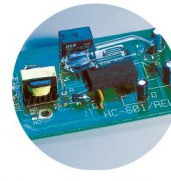
Grid Cutting Table / Honeycomb Table



Air Compressor Unit



Fume Extraction System



SmartGUARD™ Fire Alarm (Patented)



SmartAIR Nozzle



Rotary Attachment

Specification		Mercury III
Work Area		25 x 18 in. (635 x 458 mm)
Max. Part Size (L x W x H)	All doors closed	27 x 19 x 6.5 in. (685 x 482 x 165 mm)
	All doors open	27 x ∞ x 6.5 in. (685 x ∞ x 165 mm)
Table Size		31.1 x 20.9 in. (790 x 530 mm)
Dimensions		44.3 x 28.3 x 39.6 in. (1125 x 720 x 1005 mm)
Laser Source		12, 30, 40, 60W
Cooling		Air-cooled, Operating environment temperature 15° - 30°C (60° - 86°F)
Drive		Closed-loop DC Servo Control
Speed Control		Adjustable from 0.1~100% of 42 IPS (Up to 16 color-linked speed settings per job)
Power Control		Adjustable from 1-100% (Up to 16 color-linked power settings per job)
Engraving Capability		256-level gray scale image processing capability
Distance Accuracy		0.254 mm or 0.1% of move, whichever is greater
Z-Axis Movement		Automatic
Focus Lens		Standard 2.0", optional 1.5", 2.5", & 4.0" available
Resolution (DPI)		Available 125, 250, 300, 380, 500, 600, 760, 1000, 1500
Interface		10 Base-T Ethernet USB Type-A 2.0 – For USB storage (Max. 32GB capacity, FAT file system) USB Type-B 2.0 – For connecting with the computer
Compatible Operating Systems		MS Windows
Display Panel		4-line LCD panel showing current file name, total working time, laser power, engraving speed, file(s) loaded into memory buffer, setup and diagnostic menus
Safety		Class I Laser Product Compliant with EN60825, Class II Laser Product Compliant with CDRH 2006/42/EC Machinery Directive Compliance Class 4 Laser Product Compliant with CDRH with the optional pass-through door module
Auto Focus		✓
Red Dot Pointer		✓
Pass Through Doors		✓
3D and Stamp Mode		✓
Operation Voltage		100-240VAC, 50-60Hz Auto Switching, Max. 15A
Fume Extraction System		External exhaust system with minimum flow rate 640m ³ /h (CFM 377 ft ³ /min) is required, 2.3kPA negative pressure (Pure-Air PA-1000FS @ 4" exhaust port)

* Speed does not equal to throughput. See dealer or visit www.GCCworld.com for more details.

* The flow rate is determined by a default fume extraction system; the flow rate may vary due to a different fume extraction system. Authorized Dealer

△ Specifications are subject to change without prior notice.

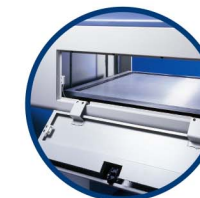
*** Please use certified brands by GCC for LaserPro USB storage, kindly refer to GCC User Manuals for more details.

GCC
LaserPro

Laser Engraver

GCC LaserPro Mercury III

The Ultimate Workhorse with a Proven Track Record



Mercury III

- 25" x 18" (635 x 458 mm) working area
- Popular all around laser engraver with stable and satisfactory performance
- Intuitive control panel allows easy operations
- Easy maintenance motion system
- Emergency button and key-switch add an extra layer of safety
- Pass-through front and rear doors to accommodate oversized working pieces
- Feature-rich windows driver
- Power by USA Made Synrad laser



www.GCCworld.com

GCC Headquarters 4F-1., No.236, Fude 2nd Rd., Xizhi Dist., New Taipei City 22151, Taiwan 886-2-6616-6692 Fax : 886-2-2694-6875
 GCC China No. 1, Chen Feng Road, Yushan, Kunshan, Jiangsu 215300, China 86-512-5726-1515 Fax : 86-512-5726-1518
 GCC Europe B.V. Eglantierbaan 43-45, 2908 LV, Capelle a/d IJssel, The Netherlands 31-10-458-9367
 GCC America, Inc 20453 E Valley Blvd. Walnut, CA 91789, USA 1-909-718-0248 Fax : 1-909-718-0251
 US & Canada Only Toll Free: 1-888-284-5211

